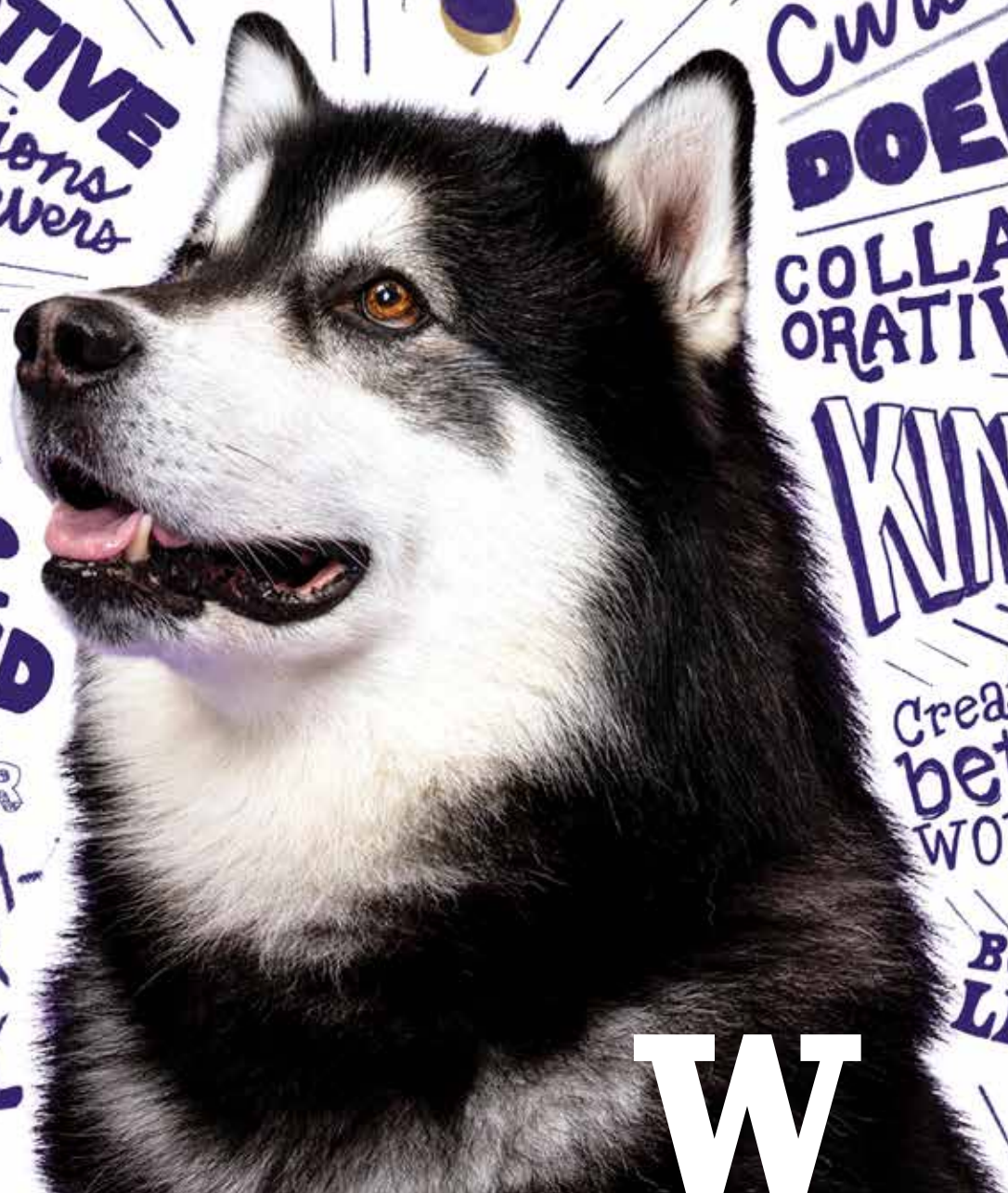


2025-26 TRANSFER
STUDENT GUIDE

What is a Husky?



CREATIVE
Questions
the Answers

Curious
DOER
COLLAB-
ORATIVE

BRAVE

**OPEN-
MINDED**

DREAMER

**PROBLEM-
SOLVER**

GLOBAL

KIND

Creates a
better
world

**BOUND-
LESS**

W

YOUR HUSKY EXPERIENCE AWAITS

At the University of Washington, we believe we can change the world with curiosity, compassion and optimism. As a public university, our mission goes far beyond our campus — and you can help take us in new directions. Come here to explore, create, build lifelong connections and be part of something bigger. What does that look like? It depends on you! Each Husky experience is unique, and we'll help you find your way.

GETTING STARTED

Make sure you're applying as the right type of applicant for your situation — whether that's transfer, postbac, first-year or Running Start. Learn more at admit.uw.edu/apply/whats-my-application-type

Look for these icons throughout this guide to find the information that's right for you.



Washington state community college transfer student



International transfer student



CONTENTS

- 02 Welcome home
- 04 Where you belong
- 06 UW impact
- 08 Academics/Hands-on research
- 10 Internships & careers
- 12 Majors
- 16 Transfer planning
- 18 Admissions
- 20 English proficiency
- 22 How to apply
- 24 Paying for college

WELCOME HOME

Do you want to be an artist, adventurer, entrepreneur — or all of the above? You can make it happen here. Nestled among snowcapped mountains, old-growth forests, Lake Washington and the Pacific Ocean, Seattle is a vibrant, multicultural city where you'll find a world of career options and endless arts, sports and outdoor opportunities for everyone.

UW COMMUTER & TRANSFER COMMONS (CTC)

Stash your lunch in the kitchen. Keep your things secure in a locker. Meet other commuting and transfer students while you study or wait for the bus. Whatever your needs, the CTC provides a dedicated space, services and resources for commuting and transfer students.

ctc.fyp.uw.edu

LIVING ON CAMPUS

You're not required to live on campus, but we have rooms and spaces for every price point and lifestyle.

hfs.uw.edu

Interested in Greek life? Join the 4,700 UW students in a fraternity or sorority. (Recruitment and timing vary by organization.)

depts.uw.edu/greek

HUSKY HEALTH & WELL-BEING

As a student, you have access to:

- Convenient medical and dental care right on campus
- Multispecialty health care for students at Husky Health Center, part of UW Medicine
- 24/7 confidential mental health support and crisis intervention
- Counseling options available to all — even if you don't have insurance
- Wellness events, classes and other resources for students throughout the year

Learn more: wellbeing.uw.edu

CAMPUS SAFETY

The UW Police Department, a full-service law enforcement agency, serves campus around the clock. Husky SafeTrip offers nighttime rides to any UW building, residence, transit stop or parking lot on or near campus. Nonpolice options include SafeCampus — a support hotline to help the UW community respond to and prevent violence — and NightRide, a free nighttime shuttle service.

uw.edu/safecampus
police.uw.edu/services/safetyservices



SEE FOR YOURSELF

The UW is a beautiful and vibrant oasis in an urban setting. Take a tour — in person or online — and get a feel for what it's like to be a Husky.

admit.uw.edu/visit



GREEN LIVING

Sustainability is in our nature! You'll find LEED-certified green buildings; reusable or compostable containers, plates and utensils wherever you eat; solar panels atop several residence halls; and even a working farm that supplies seasonal produce to dining locations across campus. green.uw.edu



WHERE YOU BELONG



We honor and celebrate the wide range of experiences and viewpoints our students bring. No matter your background or interests, at the UW you can find community, opportunity and the support to thrive academically and socially. Across campus, welcoming spaces like the Women's Center, wələbʔaltx^w – Intellectual House, Student Veteran Life, The D Center (Disability and D/deaf Cultural Center) and the Samuel E. Kelly Ethnic Cultural Center — the largest and oldest college cultural center in the nation — offer connection and resources tailored to your journey.

And that support begins before you even set foot on campus. UW recruitment teams help students and families navigate the complexities of applying to college. Once enrolled, students have access to academic advising, mentoring, financial aid counseling and tutoring — ensuring that every Husky has the tools to succeed and feel at home, through services provided by Undergraduate Academic Affairs, the Office of Minority Affairs & Diversity, and Student Life.

uw.edu/uaa
uw.edu/omad
uw.edu/studentlife

Bryan, '27
Federal Way, WA
International Business

At the UW, I've built a circle of people I trust — folks who feel like family. I met people who shared the same drive, culture and vision."



FAST FACTS

TOTAL ENROLLMENT 2024–25: 51,719
UNDERGRADUATE: 35,397

RESIDENCY

Washington	74%
U.S. nonresident	16%
International	10%

ETHNICITY

American Indian or Alaska Native	<1%
Asian American	28%
Black or African American	4.3%
Hispanic or Latino	9.6%
Native Hawaiian/Pacific Islander	<1%
White	32.4%
Two or more	5.9%
Not indicated	8.1%
International	10.9%

FIND YOUR COMMUNITY

In the Husky community you'll find others with shared interests and common ground. Take the first step toward meeting your people by joining a student club — there's an endless variety and something for everyone! All clubs are open to all current students. A small sampling:

- Advanced Robotics at the UW
- ASUW Student Disability Commission
- Black Student Union
- Comedy Club UW
- Concrete Canoe
- Eat Together
- First Nations at UW
- Furmata A Cappella
- Hip Hop Student Association
- Huskies for Neurodiversity
- Husky Gaming Nation
- Husky Pickleball Club
- MEChA (Movimiento Estudiantil Chicano de Aztlán)
- MESH Fashion Club
- Solar Chapter at UW
- Trans Collective at UW
- Unite UW (cultural exchange program)
- Vietnamese Student Association
- WOOF3D: Digital Fabrication & 3D Printing
- ... and a thousand more!

Find a group or create your own:

huskylink.washington.edu



CENTER FOR INTERNATIONAL RELATIONS & CULTURAL LEADERSHIP EXCHANGE (CIRCLE)

No matter where you're from, exposure to a global society is part of a world-class education. Through community, activities and resources, CIRCLE helps UW students from the U.S. and beyond expand their horizons together.

uw.edu/circle

A TOP

10

Best LGBTQ+ College
College Rover, 2025

27%

of Huskies on the Seattle campus are the first in their families to attend college.



CHEER ON THE DAWGS!

Fifteen appearances at the Rose Bowl, and a historic run to the college football playoffs. A tradition of conference championships — most recently in men's track and field — and top national programs in football, softball and rowing. From Husky Stadium to the Montlake Cut, fans have plenty to cheer about as the Dawgs enter a new era in the Big Ten Conference.

gohuskies.com

IMPACT OVER 164 YEARS

Whether we're making The Wave famous or making waves in health care, technology, social justice or athletics, the UW has sent out ripples of impact since 1861.

#1 Undergraduate School in the West for Entrepreneurship
Entrepreneur Magazine, 2025

The UW conducts **more federally sponsored research** than any other U.S. public university — including research that won the 2024 Nobel Prize in Chemistry!



#3 School Producing the Most Peace Corps Volunteers, 2025



#7 Best Global University
U.S. News & World Report, 2025

#4 Among U.S. Public Universities
Times Higher Education, 2025



RUN WITH THE PACK
Some well-known Huskies



ADA LIMON, U.S. poet laureate
ANNA FARIS, "Scary Movie" series actor
BARBARA EARL THOMAS, visual artist
BEVERLY CLEARY, beloved children's author
BRUCE LEE, martial artist
DAVID BAKER, 2024 Nobel-winning biochemist
THE FUNG BROTHERS, YouTube comedians
JEAN SMART, Emmy-winning "Hacks" star
JEFF BROTMAN, Costco co-founder
JOEL MCHALE, "Community" actor

KENNY G, saxophonist
KIM THAYIL, Soundgarden guitarist
KRISTIN HANNAH, "Firefly Lane" author
MARILYNNE ROBINSON, Pulitzer Prize-winning author
MICHAEL P. ANDERSON, NASA astronaut
KYU LEE, film producer
RAINN WILSON, "The Office" actor
RYAN LEWIS, DJ and music producer
SALLY JEWELL, former U.S. secretary of the interior
STEVE POOL, Seattle meteorologist

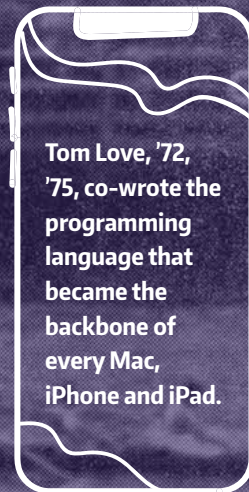
UW aerospace engineers have helped revolutionize air travel, from the first West Coast wind tunnel to the 787.



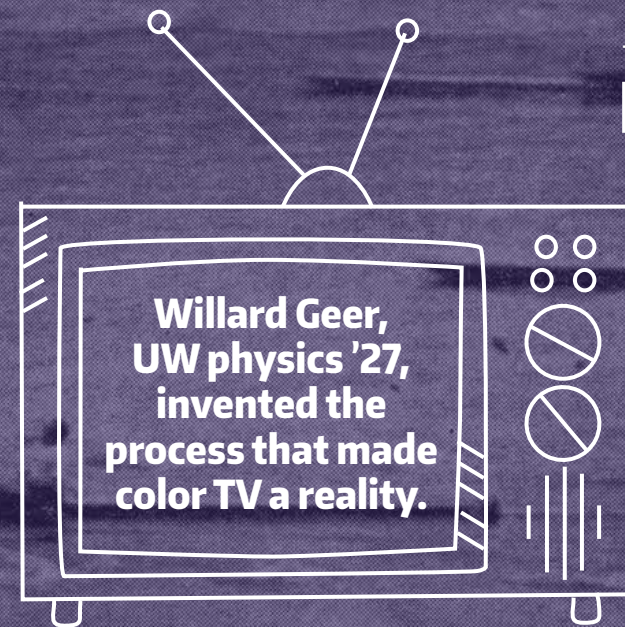
TIM PATERSON, '78, WROTE THE DISK OPERATING SYSTEM THAT BECAME MS-DOS.



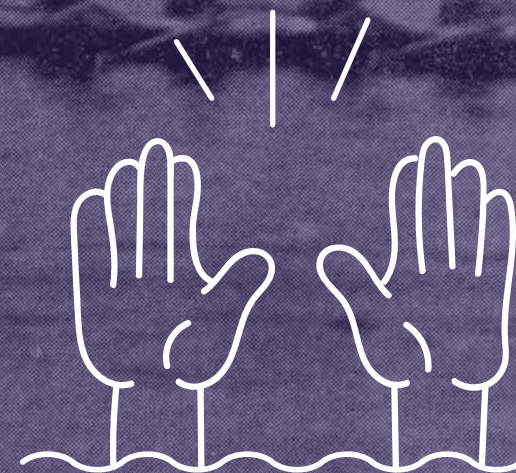
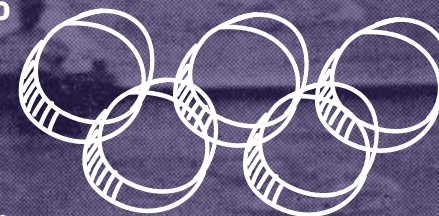
Tom Love, '72, '75, co-wrote the programming language that became the backbone of every Mac, iPhone and iPad.



Willard Geer, UW physics '27, invented the process that made color TV a reality.



A UW eight-oar rowing team — the famed "Boys in the Boat" — won gold at the 1936 Berlin Olympics in the lead-up to WWII, inspiring a bestselling book and a new film directed by George Clooney.



The Wave was popularized by UW cheerleader Robb Weller in 1981 and quickly swept the nation.

A WORLD-CLASS EDUCATION

Innovative, passionate, approachable. Our highly respected instructors bring their research and lived experiences into the classroom, inspiring you to think in new ways about a subject and the world. They engage you in understanding and addressing the most pressing challenges of our time. They're caring mentors who want to get to know you as a person and help open doors to other opportunities.

“My favorite professor is Andrew Feld, who helped me grow through my writing by encouraging me to explore the deeper meanings. I got my works published, and I'll be forever thankful to him and my other professors.”

Zainab, '25
Transfer Student
Newcastle, WA
English-Creative
Writing



#2

DEPT. OF OCEANOGRAPHY
IN THE WORLD
Global Ranking of Academic
Subjects, 2024

#2

DEPT. OF ATMOSPHERIC
SCIENCES IN THE WORLD
Global Ranking of Academic
Subjects, 2024

90%

OF CLASSES HAD 100
OR FEWER STUDENTS
(2024–25)

HANDS-ON RESEARCH

Just a few examples of UW undergrad research:



KRISTIN BENNETT, '25

Chemical Engineering

As a Navy vet with service-related disability, Kristin is inspired to help others. At the UW Nance Lab, she studies how living slices of brain tissue react to traumatic injury.



MARY BUN, '25

Electrical Engineering and Psychology

Driven by a passion she first discovered in an Engineering 101 course, Mary works with the Ahmed Lab at the UW, studying fruit fly behaviors to gain insight into disorders like Parkinson's.



KYRA WOLFENBARGER, '25

Interdisciplinary Visual Art

In the UW's Summer Institute in the Arts and Humanities, an undergraduate research program, Kyra used research and her art to explore how Black families archive their personal histories.



ANDRE YE, '25

Computer Science and Philosophy

Curious about how computer science and human values work together, Andre's research projects include examining how we can better use AI to broaden our thinking.



Research isn't just for graduate students, and it's not just for STEM fields! It's a creative, methodical way to explore your interests and gain real-life skills. In fact, the majority of undergrads participate in research at the UW — helping them think in new ways, explore further education, bond with classmates over a shared purpose and get valuable experience that prepares them for careers. If you're curious about a topic and find a mentor to guide you, you can do research as a UW undergraduate.

UNDERGRADUATE RESEARCH SYMPOSIUM

The annual UW Undergraduate Research Symposium (*above*) features over 1,000 Huskies presenting their research through oral presentations, arts showcases and posters. Recent topics have included:

- Mental-health-related social media apps
- The Supreme Court of the Philippines
- New therapies for late-stage prostate cancer
- Impact of gender stereotypes on dance culture
- Predicting disaster-resilient bridges
- Remote sensing to study climate change

uw.edu/undergradresearch

JUMP-START YOUR CAREER HERE

Let's get you where you want to go. Gain hands-on experience through internships, research and service learning, with mentors to help guide you along the way. Husky graduates are sought after by a wide range of employers — large and small; private-sector, public and nonprofit; here in the Pacific Northwest and around the world.

admit.uw.edu/careers

85%

of students are employed or in graduate school within 7 months of graduation

94%

of recent grads said their UW experience prepared them for their career goals

78%

of students graduate with internship experience



When I applied to the UW, I didn't realize how many career opportunities I would have as early as my first year. Even in my first two years, I have had two internships, held an on-campus student job and studied abroad."

Sophia, '25
Wenatchee, WA
Education, Communities
and Organizations (ECO)
and Political Science



At Grayland Beach State Park in southwest Washington, a team of undergraduate and graduate students helps excavate a Baird's beaked whale for the UW's Burke Museum of Natural History and Culture.

EXPERIENTIAL LEARNING

The UW Center for Experiential Learning & Diversity (EXPD) offers a wide range of programs for hands-on learning: Find opportunities for research, service learning, volunteering, leadership and scholarships.

expd.uw.edu

ENCOURAGING ENTREPRENEURSHIP

Seattle is one of the hottest markets for startups. Learn the step-by-step process of launching a new venture at the UW Buerk Center for Entrepreneurship. Or apply to the immersive Lavin Entrepreneurship Program for mentoring, networking, internships and job-search support. If you're ready to launch your own company, get training, funding and advice from the UW Jones + Foster Accelerator Program and CoMotion.

comotion.uw.edu

LEARNING THROUGH COMMUNITY

Our students help carry out the UW's mission as a public university. Learn and make a difference by volunteering with a community organization as part of a course or internship: Tutor K-12 students, get your hands dirty at the urban UW Farm, educate young voters in the community, work with a local nonprofit, and many more opportunities.

cele.uw.edu

STUDY ABROAD

Get outside your comfort zone, learn more about the world and yourself, and earn credits while living in another country. Studying abroad is an option for all UW students, no matter your major or foreign language skills. We work to make it practical and affordable for every Husky.

uw.edu/studyabroad

WHAT'S YOUR MAJOR?

Consider your interests:

Which classes do you enjoy most?

Assess your abilities:

What are your strengths and challenges?

Explore your options:

With over 180 majors at the UW, many paths can lead from a single interest.



What sparks your curiosity?



Undergraduate majors:
admit.uw.edu/majorslist

ADMISSION TO MAJORS

Admission to majors for transfer students depends largely on the program to which you're applying. Some UW programs require that you enroll at the UW before applying to the major, while others require a separate application in addition to the main UW application. Visit our Choosing a Major page to find specific requirements for each major:

admit.uw.edu/academics/majors

Transferring to the UW takes careful planning, and your preparation for your intended major is a factor in the transfer holistic review. So it's important to understand the requirements of your major before you apply. There are three main types of departmental admissions:

OPEN MAJORS (+)

These majors are available when you're admitted to the UW or can be declared at any time by any student in good academic standing.

MAJORS WITH MINIMUM REQUIREMENTS (—)

These majors have a set of prerequisite courses with a minimum GPA. All current UW students who meet the minimum requirements are admitted.

CAPACITY-CONSTRAINED MAJORS (▲)

These majors have admission requirements and a selective screening process, often with their own application deadline; they may also require portfolios, auditions, letters of recommendation or interviews. Completing the minimum admission requirements does not guarantee admission to capacity-constrained majors.

DEPARTMENTAL VS. UNIVERSITY DEADLINES

Applicants to capacity-constrained majors should file a UW application and may need to file a separate application with the department. Regardless of the department's deadlines, you must complete your UW application by the deadlines on page 23.

TIP: APPLYING TO MAJORS

Some UW majors are in greater demand than others, and capacity may be limited; we can't guarantee that you'll be admitted to the major of your choice. You may apply to more than one major, so we encourage you to explore and develop a plan for a second-choice major. Use your personal statement to explain what you'll do if you're not admitted to your first-choice major. This information will help Admissions staff understand your plans.



Aeronautics & Astronautics ▲■
American Ethnic Studies +
American Indian Studies +■
Anthropology +■
Anthropology of Globalization; Archaeological Sciences; Human Evolutionary Biology; Indigenous Archaeology; Medical Anthropology & Global Health
Applied & Computational Mathematical Sciences (ACMS) ▲
Biological & Life Sciences; Data Sciences & Statistics; Discrete Math & Algorithms; Engineering & Physical Sciences; Mathematical Economics & Quantitative Finance; Scientific Computing & Numerical Algorithms; Social & Behavioral Sciences
Applied Mathematics ▲■
Aquatic Conservation & Ecology +■
Architectural Design ▲■
Architectural Studies ▲■
Art —■
Interdisciplinary Visual Arts; Painting & Drawing; Photomedia; Three-Dimensional Forum
Art History —■
Asian Language & Cultures +■
Asian Studies +
Astronomy ▲
Atmospheric & Climate Science —■
Chemistry; Climate; Data Science; Meteorology
Biochemistry ▲
Bioengineering ▲
Data Science; Nanoscience & Molecular Engineering
Biology ▲
Ecology, Evolution & Conservation; General Biology; Molecular, Cellular & Developmental; Physiology; Plant

Business Administration ▲■
Accounting; Entrepreneurship; Finance; Human Resource Management; Information Systems; Marketing; Operations & Supply Chain Management
Chemical Engineering ▲
Nanoscience & Molecular Engineering
Chemistry —■
Chinese —■
Cinema & Media Studies —
Civil Engineering ▲
Classical Studies +■
Classics +
Communication ▲
Journalism & Public Interest Communication
Community, Environment & Planning ▲■
Comparative History of Ideas +■
Comparative Literature —■
Comparative Religion +■
Computational Finance & Risk Management ▲
Data Science
Computer Engineering ▲
Computer Science ▲
Construction Management ▲■
Dance —■
Danish +■
Data Science ■ (minor only)
Design ▲
Industrial Design; Interaction Design; Visual Communication Design
Disability Studies (Individualized Studies) —■
Drama —
Design; Performance

Early Childhood & Family Studies ▲
Teaching & Learning
Earth & Space Sciences +■
Biology; Environmental Earth Sciences; Geology; Physics
Economics ▲
Education, Communities & Organizations ▲
Education Studies —
Early Childhood Studies; Education Research & Policy; Foundations of Teaching; Sports & Education
Electrical & Computer Engineering ▲
Electrical Engineering ▲
Nanoscience & Molecular Engineering
English —■
Creative Writing; Language & Literature
Environmental Design & Sustainability +
Environmental Engineering ▲
Environmental Health —■
Environmental Science & Terrestrial Resource Management —■
Landscape Ecology & Conservation; Restoration Ecology & Environmental Horticulture; Sustainable Forest Management; Wildlife Conservation
Environmental Studies +■
Ethnomusicology ▲
European Studies +■
Finnish +■
Food Systems, Nutrition & Health —
French +■
Gender, Women & Sexuality Studies +■

Geography —■
*Cities, Citizenship & Migration; Data Science; Environment, Economy & Sustainability; Globalization, Health & Development; GIS, Mapping & Society **
Germanics —■
Global Literary Studies ▲
Greek +■
Guitar ▲
History —■
History of Empire & Colonialism; History of Race, Gender & Power; History of Religion & Society; History of War & Society
History & Philosophy of Science —
Human Centered Design & Engineering ▲
Data Science
Industrial Engineering ▲
Data Science
Informatics ▲■
Biomedical & Health Informatics; Data Science; Human-Computer Interaction; Information Architecture; Information Assurance & Cybersecurity
International Studies ▲
Italian +■
Japanese —■
Linguistics; Literature
Jazz Studies ▲
Jewish Studies +■
Korean —■
Landscape Architecture ▲■
Latin +■
Latin American & Caribbean Studies +■
Law, Societies & Justice ▲■
Leadership ■ (minor only)

Linguistics —■
Romance Linguistics
Marine Biology +■
Materials Science & Engineering ▲■
Nanoscience & Molecular Engineering
Mathematics ▲■
Philosophy; Teacher Preparation
Mechanical Engineering ▲
Biomechanics; Mechatronics
Medical Laboratory Science ▲
Microbiology —■
Music Composition ▲
Music Education ▲
Instrumental; Vocal
Music ▲■
American Music Studies; Early Music; Instrumental; Music History; Music Theory; Voice
Near Eastern Studies +■
Comparative Civilizations; Hebrew Bible & Ancient Near Eastern Studies; Languages & Cultures
Neuroscience ▲
Norwegian +■
Nursing ▲
Oceanography +■
Orchestral Instruments ▲
Organ ▲
Percussion Performance ▲
Orchestral Percussion
Philosophy —■
Ethics
Physics ▲■
Applied Physics; Biological Physics; Comprehensive Physics; Teacher Preparation
Piano ▲
Political Science —■
International Security; Political Economy

Psychology ▲
Public Health–Global Health ▲
Public Service & Policy —■
Real Estate —■
Scandinavian Area Studies +■
Slavic Languages & Literature +■
East European Languages, Literature & Culture; Russian Language & Literature
Social Welfare ▲
Sociology —
South Asian Languages & Literature — ■
Spanish —■
Speech & Hearing Sciences ▲
Statistics ▲■
Data Science
Strings ▲
Sustainable Bioresource Systems Engineering —
Swedish +■
Voice ▲

KEY

- + Open
- Minimum requirements
- ▲ Capacity-constrained
- Minor available
- Italics indicate curricular options in the major.*



For more info about all UW majors:
admit.uw.edu/academics/majors

TRANSFER PLANNING

Transferring takes careful planning: You'll be working simultaneously on requirements for admission to the UW, for your intended major, for graduation from the UW and possibly for an associate degree. The more you work on multiple requirements at the same time, the smoother and more successful your transfer to the UW will be.

admit.uw.edu/apply/transfer/resources

TRANSFER PORTAL

Don't miss a step of the transfer process. Visit the Transfer Portal to learn what you'll need to know before you apply, when you prepare to apply and once you become a Husky.

transfer.uw.edu

UNDERSTAND YOUR MAJOR

Different majors have different admission policies. Make sure you understand the requirements for your intended major.

admit.uw.edu/majors

UW DEPARTMENT WEBSITES

Especially for capacity-constrained majors, department websites can answer questions about admission to the major, the departmental application process and transfer course requirements for that program.

VETERAN SUPPORT

The UW has a long history of educating veterans, active-duty military and military-dependent students. The Veterans Education Benefits Office is here to help you navigate your funding options, from VA education benefits and state waivers to financial aid and scholarships.

uw.edu/veterans



FOR COMMUNITY COLLEGE STUDENTS IN WASHINGTON

EQUIVALENCY GUIDE

How will the classes you've taken transfer to the UW? The Equivalency Guide contains course equivalencies for all community and technical colleges in Washington.

admit.uw.edu/apply/transfer/equivalency-guide

MY PLAN

See the Equivalency Guide in action: MyPlan helps you determine how courses you've taken or plan to take at Washington community or technical colleges translate to progress toward a UW degree. Print your plan and share it with our advisers to make sure you're on the right track for academic success.

myplan.uw.edu



FOR ALL OTHER TRANSFER STUDENTS

Use the descriptions in the UW Course Catalog to compare UW courses to the ones at your transfer institution:

uw.edu/students/crscat

Keep syllabi and other course materials to facilitate the evaluation of transfer credit.



TRANSFER THURSDAYS

All prospective transfer students are invited and encouraged to attend Transfer Thursday, where you'll learn more about transferring to the UW, including departmental information. Check the Transfer Thursday website for the schedule offered on the specific Thursday you plan to attend. Not all topics are offered every week.

admit.uw.edu/visit/campus-tours

TRANSFER WEBINARS

Can't make it to a Transfer Thursday session? Join us for a webinar. You'll hear from an admissions counselor and an academic adviser about the transfer process.

admit.uw.edu/visit/campus-tours

ADDITIONAL RESOURCES

Transfer credit policies: admit.uw.edu/apply/transfer/policies

Exams for credit, including Advanced Placement (AP) and International Baccalaureate (IB): admit.uw.edu/apply/transfer/exams-for-credit



ADMISSIONS



“I’ve established a strong network of people who care about my success — socially, academically, professionally and emotionally. I’ve found a home here at the UW, and you can too!”

Maggie, '25
San Bruno, CA
Public Health

ADMITTED STUDENT OVERVIEW

3-YEAR AVERAGES, 2022–24

ADMIT RATE 72% Washington community colleges 22% all other four-year and two-year institutions	AVERAGE COLLEGE GPA Middle 50% 3.24–3.86
---	--

MINIMUM ADMISSION REQUIREMENTS

Applications should meet these minimum qualifications to ensure a comprehensive review.

COLLEGE ACADEMIC DISTRIBUTION REQUIREMENTS (CADRS)

Admission to the UW requires **either**:
1) meeting the CADR coursework requirements below (in high school, college or a combination) **or**
2) having at least 40 transferable college quarter credits by the time you apply.

CADR subject credits required*	
English	4
Mathematics	3
Social studies/social sciences	3
World languages	2
Science	3 (2 in lab science)
Senior year math-based quantitative course	1
Fine, visual or performing arts	0.5
Academic electives	0.5

*1 credit = 1 year

Learn more about CADRs:
admit.uw.edu/apply/transfer/cadr

TEST SCORES

SAT or ACT scores are not required, regardless of the number of transferable college credits you have earned.

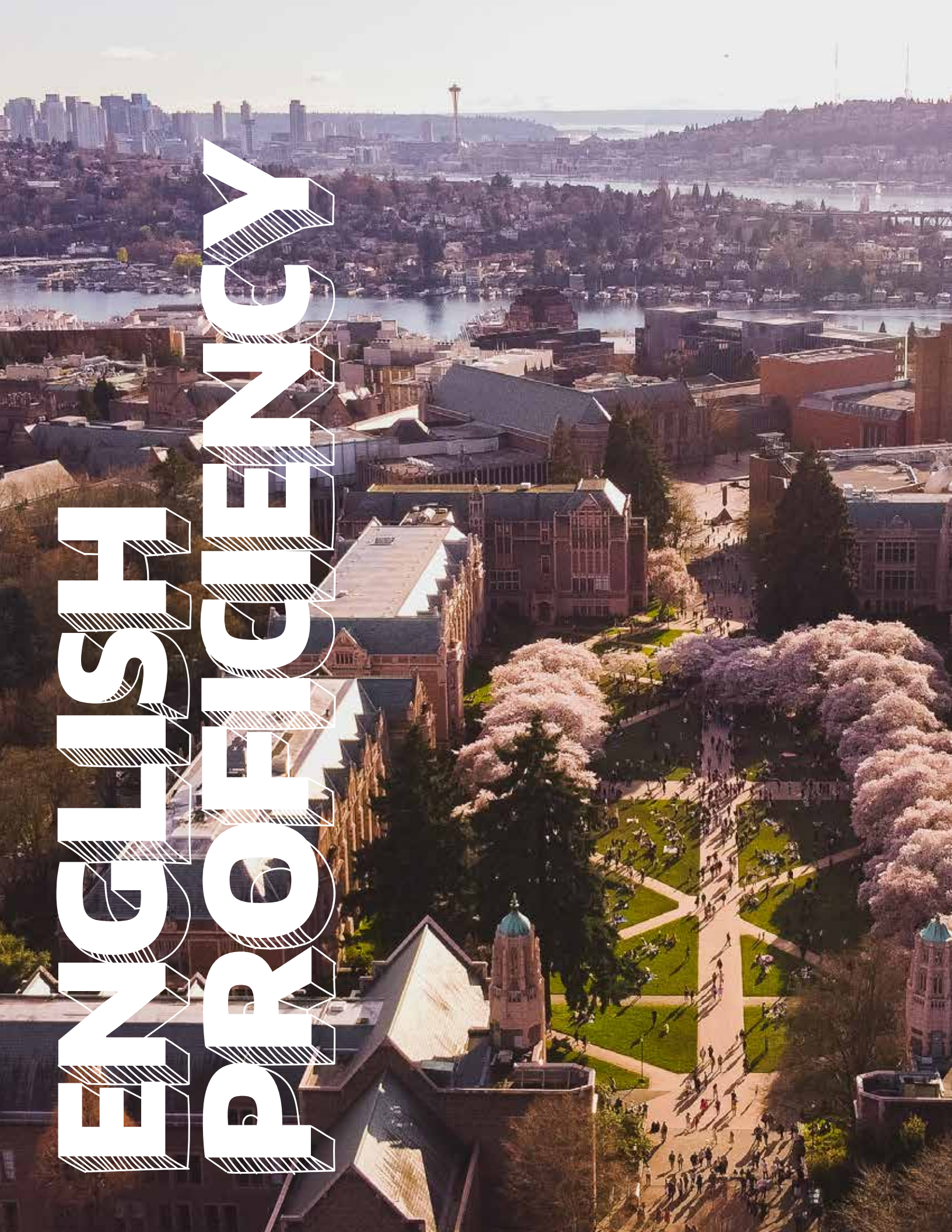
TRANSFER GPA

A transfer GPA of 2.50 or higher is required to receive a comprehensive review.

admit.uw.edu/apply/transfer/transfer-gpa



Everything you need
for transfer admission:
admit.uw.edu/apply/transfer



FOR INTERNATIONAL TRANSFER APPLICANTS

ENGLISH PROFICIENCY EXAM REQUIRED	TOEFL (iBT)*	IELTS	DET
MINIMUM SCORE REQUIRED	76	6.0	110
AVERAGE SCORE	96 or higher	6.5	125 or higher

**Beginning Jan. 21, 2026, TOEFL iBT score reports will feature a new 1–6 scale. See our website for the latest information.*

International students must submit an official test score that meets the UW's minimum English proficiency requirement. The exam must be taken on or before February 15 of the year you apply, and scores must be sent directly from the testing agency to the UW.

admit.uw.edu/apply/transfer/how-to-apply/english-proficiency

Using SAT or ACT scores as an English proficiency alternative

The SAT and ACT are not required for admission, but international students may use one of those exams to satisfy English proficiency. The UW considers English proficiency met if you meet both the following conditions:

- A minimum grade of B in all secondary-school-level English writing or literature courses where English is the school's primary language of instruction for grades 10–12, and
- A minimum ACT English score of 22 or SAT Evidence-Based Reading and Writing score of 580

Do I need to submit a test score for English proficiency if I've taken college ESL or English courses, or I have an associate degree?

Yes, international students are required to submit an English proficiency exam score, even if they have previous college coursework or an associate degree.



HOW TO APPLY

APPLY BY THE DEADLINE

admit.uw.edu/apply/transfer/how-to-apply

UW APPLICATION

All transfer applications must be submitted online.

APPLICATION FEE

The application fee is nonrefundable and must be submitted every time you apply. Fee waivers are available.

PERSONAL STATEMENT

Find more information about writing the personal statement online at admit.uw.edu/apply/transfer/how-to-apply/personal-statement.

TRANSCRIPTS

Official transcripts are required. For more information on which transcripts to submit, how to submit them and what makes a transcript official, visit admit.uw.edu/apply/transfer/how-to-apply/transcripts.

APPLICATION TO INTENDED MAJOR OR DEPARTMENT (IF APPLICABLE)

Find everything you need to know about the requirements for your intended major at admit.uw.edu/academics/majors.

You are strongly encouraged to submit a department application if you meet prerequisites and are applying to a capacity-constrained major.



FOR INTERNATIONAL TRANSFER APPLICANTS

OFFICIAL TOEFL, IELTS OR DUOLINGO SCORES

Official English proficiency exam scores must be sent directly from the testing agency. See instructions on page 21.

PROOF OF FUNDING

Proof of funding is not required at the time of application. However, if admitted, it is required before the UW can issue immigration documents. See page 25 for more information about the cost of attendance.



KEY DATES & DEADLINES

All required materials must be submitted or postmarked by the application deadline to make sure you're considered for admission. We encourage you to submit all required materials far in advance of the deadline. Incomplete applications will not be considered.

QUARTER OF APPLICATION	AUTUMN	WINTER	SPRING ¹	SUMMER ²
APPLICATION OPENS	December 15	August 1  <small>FOR INTERNATIONAL TRANSFER APPLICANTS Winter quarter not open to international transfer applicants</small>	November 1 <small>Selected majors only</small>	December 15
APPLICATION DEADLINE	February 15	September 1	December 15	February 15
NOTIFICATION PERIOD	May 1–June 30	November 1–December 15	February–March	May 1–31
ADVISING & ORIENTATION FOR NEW STUDENTS	July–September	December–January	March	July–September
INSTRUCTION BEGINS	Late September	Early January	Late March	Mid-June

¹ Spring quarter is not open for general admission. It is open only for those applying to specific majors. Read more at admit.uw.edu/apply/transfer/spring.

² Choosing summer quarter means you wish to begin full-time enrollment in summer and continue into autumn as a degree-seeking student. Failure to enter summer quarter cancels autumn enrollment. Apply for summer quarter as a nondegree student at summer.uw.edu.

WATCH YOUR INBOX

After you apply, the Office of Admissions will email you confirmation that we've received your application. We may also send other important information or updates, so please check your email. Once you have set up your UW NetID, you may also use MyUW to check your application status.



PAYING FOR COLLEGE



"There are many sources of funding to take advantage of at the UW and great advisers who want to help you find them!"

Jamie, '25
Snohomish, WA
English and Sociology

We believe that Washington students from all economic backgrounds should have the opportunity to attend the University of Washington. UW graduates complete college with less debt than the national average.

TOTAL COST OF ATTENDANCE 2025–26

TUITION

Washington resident: \$13,406
Nonresident: \$44,640

OTHER BUDGET CONSIDERATIONS

Books & course supplies: \$900
Housing & food: \$18,405
Personal/misc. expenses: \$2,508
Transportation: \$519

FINANCIAL AID

For U.S. citizen and permanent resident students to be considered for all forms of UW financial aid, they must file the Free Application for Federal Student Aid (FAFSA). Students who are living in Washington and unable to file the FAFSA may file the Washington Application for State Financial Aid (WASFA).

To be considered for financial aid your first year at the UW, file the FAFSA or WASFA by the UW priority deadline.

For more information, including the latest UW priority deadlines, visit:

- uw.edu/financialaid
- fafsa.gov
- wsac.wa.gov/wasfa

HUSKY PROMISE

The Husky Promise is our guarantee that financial challenges will not stand in the way of Washington state students' ability to earn a UW degree. It ensures that full tuition and standard fees will be covered by grant or scholarship support for eligible students.

uw.edu/huskypromise

SCHOLARSHIPS

The UW offers scholarships for everything from academic pursuits and research activities to community service and musical talent. U.S. students are considered for some scholarship programs automatically as part of their admission or financial aid applications, while other programs are available to all students through departments once enrolled.

admit.uw.edu/scholarships

MORE INFORMATION

Net price calculator:

admit.uw.edu/net-price-calculator

Washington state residency:

admit.uw.edu/residency

Washington College Grant:

wsac.wa.gov/wcg

Veterans Education Benefits Office:

uw.edu/veterans

OVER
50% OF UNDERGRADS
RECEIVE SOME FORM
OF FINANCIAL AID

71% OF THE CLASS OF '24
GRADUATED WITH
NO KNOWN DEBT

A TOP
10 "BEST BUY" AMONG U.S.
PUBLIC COLLEGES AND
UNIVERSITIES
Fiske Guide to Colleges, 2025



UNIVERSITY *of* WASHINGTON
1410 NE Campus Parkway, Box 355852
Seattle, WA 98195-5852

UNIVERSITY OF WASHINGTON

1410 NE Campus Parkway, Box 355852
Seattle, WA 98195-5852
206-543-9686
admit.uw.edu

UW BOTHELL

18115 Campus Way NE, Bothell, WA 98011
425-352-5000
425-352-5303 (TDD)
askuwb@uwb.edu
uwb.edu

UW TACOMA

1900 Commerce St., Tacoma, WA 98402
253-692-4000
800-736-7750
uwtinfo@uw.edu
tacoma.uw.edu

Full list of transfer resources:
[admit.uw.edu/apply/
transfer/resources](https://admit.uw.edu/apply/transfer/resources)

