

What is a Husky?



CREATIVE
Questions
the Answer

BRAVE

OPEN-
MINDED

DREAMER

PROBLEM-
SOLVER

GLOBAL

Curious
DOER

COLLAB-
ORATIVE

KIND

Creates a
better
world

BOUNDLESS

W

**SOCIAL JUSTICE.
EQUITY.
SUSTAINABILITY.**

**BIG IDEAS MATTER TO YOU,
JUST LIKE THEY MATTER TO US.**

**At the University of Washington,
we believe we can tackle big issues
together, with curiosity, compassion
and optimism. As a public university,
our mission goes far beyond our
campus — and you can help take us in
new directions. Come here to explore,
create, discover and be part of
something bigger.**

**Because above all, we believe that what
you care about can change the world.**

W



CONTENTS

- 02 SEATTLE
- 06 HOUSING
- 08 FIND YOUR COMMUNITY
- 12 ATHLETICS
- 14 UW IMPACT
- 16 STUDENT IMPACT
- 18 MAJORS
- 24 ACADEMICS
- 28 INTERNSHIPS & CAREERS
- 32 HOW TO APPLY
- 34 COSTS & FINANCIAL AID
- 36 NEXT STEPS



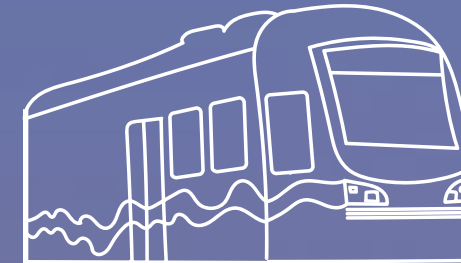
SEATTLE

Do you want to be an artist, adventurer, entrepreneur — or all of the above? You can make it happen here. Nestled among snowcapped mountains, old-growth forests, Lake Washington and the Pacific Ocean, Seattle is a vibrant, multicultural city where you'll find a world of career options and arts, sports and outdoor opportunities for everyone.

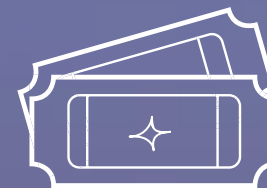
The University of Washington's campus in Seattle occupies the traditional land of the Coast Salish peoples — land that touches the shared waters of all tribes and bands within the Suquamish, Tulalip and Muckleshoot nations.

29 FEDERALLY
RECOGNIZED
INDIGENOUS TRIBES
IN WASHINGTON

100+
FESTIVALS FOR MUSIC,
ARTS, FILMS AND CULTURE



METRO
POPULATION
4
MILLION



#2
HEALTHIEST
PLACE TO LIVE IN
THE U.S.
WalletHub, 2021

Seattle is an exciting place to live and learn — and easy to explore by public transit.

There's always something new to discover in the city's diverse neighborhoods, whether you're looking for your favorite coffee spot, biking along the waterfront trails or seeing a live show at the KEXP Studio.

The UW's lush, parklike campus is about 4 miles (6 km) from the Seattle city center. The University is served by two light-rail train stations and many bus routes. Ride the train downtown in just minutes or stay on board for Seattle-Tacoma International Airport.



SKIING AND
SNOWBOARDING

<1 hour
away

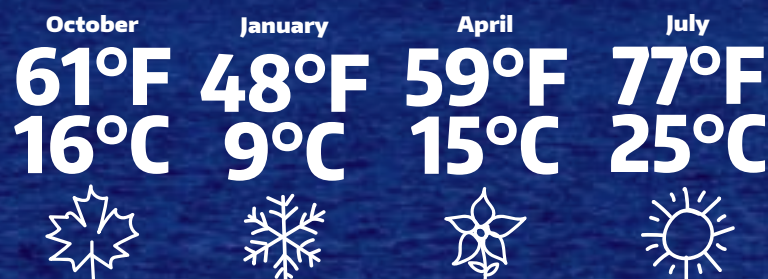
200

MILES OF SHORELINE AND
NEARLY 500 CITY PARKS

Despite its rainy image,
Seattle summer days are
often sunny and dry.

Some cities with more rain than Seattle:
HOUSTON | MIAMI | NEW YORK
SEOUL | SHANGHAI | VANCOUVER

AVERAGE HIGH TEMPERATURES



#1

Best City for Outdoor
Activities in America
Niche, 2021



W

UNIVERSITY of WASHINGTON





ARTS & CULTURE

Seattle is a city that loves the arts. There are endless opportunities to experience the culture of the city, from world-class museums to art at light-rail stations, neighborhood parks and occasionally underneath bridges, like the iconic Fremont Troll sculpture. Catch some live music at the Neptune Theatre (just three blocks from campus), the Crocodile or the Showbox. See a hilarious evening of improv at Theatresports or enjoy a Broadway musical at the Paramount Theatre.

SPORTS

Seattle loves its pro sports! Our home teams include the Mariners (baseball), Kraken (ice hockey), Sounders (men's soccer), OL Reign (women's soccer), Seahawks (football) and the Storm (women's basketball).

FOOD

Seattle has something for every taste and culture, so you can sample flavors from around the world, enjoy local freshness from the Pacific Northwest or get a taste of home, no matter where that might be. Many of the city's best eats (and countless bubble tea shops) are just a few blocks from campus in the University District and nearby University Village.



FIND YOUR COMMUNITY

The UW isn't just a place; it's a community. Find a sense of belonging in the more than 1,000 student clubs – from cultural organizations to Greek life, archery to a cappella. Or join a First-year Interest Group (FIG), a small learning group that connects you with other students and peer mentors. Learn more about first-year programs: fyp.washington.edu



9

FIND YOUR COMMUNITY

1,000+ STUDENT CLUBS!

A SMALL SAMPLING:

- Black Student Union
- Chess Club
- Unite UW
- Comedy Club UW
- Disability Advocacy Student Alliance
- FirstUW (for first-generation college students)
- First Nations at UW
- Hip Hop Student Association
- Huskies for Neurodiversity
- Husky Gaming Nation
- Latinx Student Union at the University of Washington
- TEDxUofW
- Solar Chapter at UW
- Unleashed! A Cappella
- Vietnamese Student Association
- WOOF 3D Printing Club
- ... and many more



"Definitely join a First-year Interest Group (FIG)! It's a great way to build community with a small group of students who will take the same classes as you."

Thomas, '24
Sammamish, WA
Business Administration



Find an organized group or create your own:
huskylink.washington.edu



WHERE YOU BELONG

At the University of Washington, we value and honor diverse experiences — and strive to create a home away from home for students of all backgrounds. Across campus, you'll find welcoming spaces like the Women's Center, Q Center, wələbʔaltx^w – Intellectual House and the Samuel E. Kelly Ethnic Cultural Center, the largest and oldest college cultural center in the country. The Office of Minority Affairs & Diversity, rooted in student-led activism, works to foster diversity on campus and support students from communities that have often been excluded from higher education.

uw.edu/diversity

“The UW was the first university where I felt supported as a member of the LGBTQIA+ community, person of color and first-generation student.”

Francisco, '24
White Swan, WA
Entrepreneurship
and Marketing

wələbʔaltx^w – Intellectual House is a longhouse-style gathering space for American Indian and Alaska Native students, faculty and staff and the whole UW community.



TOTAL ENROLLMENT
2021-22: 48,582
UNDERGRADUATE: 32,779

UNDERGRADS: FAST FACTS

ETHNICITY

African American	3.0%
American Indian/Alaska Native	0.4%
Asian American	26.0%
Hispanic/Latino	9.1%
Native Hawaiian/Pacific Islander	0.4%
White	34.8%
Two or more	7.6%
Not indicated	5.2%
International	13.5%

RESIDENCY

Washington	59%
U.S. nonresident	25%
International	16%

TOP 10 COUNTRIES FOR INTERNATIONAL STUDENTS

Canada	Japan
China	South Korea
Hong Kong	Taiwan
India	Thailand
Indonesia	Vietnam

IN THE
50
Top Ethnically
Diverse U.S.
Colleges
*Best College
Reviews, 2021*

#2
School in the
Country for
LGBTQ+ Students
*Bestcolleges.com,
2020*

NEARLY
28%
of Huskies on the
Seattle campus
are the first in
their families to
attend college.



2023 CHEERLEADERS!

Fifteen appearances at the historic Rose Bowl. A tradition of Pac-12 championships — most recently in men's golf and women's volleyball — and nationally eminent programs in softball and rowing. From Husky Stadium to the Montlake Cut, Dawg fans always have plenty to cheer about.

NCAA DIVISION 1

WOMEN:

- Basketball
- Beach volleyball
- Cross country
- Golf
- Gymnastics
- Rowing
- Soccer
- Softball
- Tennis
- Track & field
- Volleyball

MEN:

- Baseball
- Basketball
- Cross country
- Football
- Golf
- Rowing
- Soccer
- Tennis
- Track & field

gohuskies.com

INTRAMURAL SPORTS

The Intramural Sports program has more than 30 leagues, tournaments and events, offering bowling to badminton, triathlon to tennis, dodgeball to volleyball. With Open, Co-Recreational, Women's and Men's divisions and a range of levels from newbie to expert, everyone can find a way to get their game on.

uw.edu/ima/intramurals

IMA BUILDING

The Intramural Activities (IMA) Building is your ultimate playground. Inside, you'll find an indoor track; a squash court; Craggs Climbing Center; weight, strength-training, cardio and archery rooms; a cycling studio; two pools and more. The fun continues outdoors: Canoe and kayak at the Waterfront Activities Center (WAC) on Union Bay, play softball at Denny Field, practice your swing at the 42-tee golf range or rent outdoor gear at the Gear Garage. Plus, a Rec Class Pass gets you into dozens of classes, including flow yoga, Barre and mindfulness.

uw.edu/ima

RECREATION CLUBS

Rec clubs are organized, managed and operated by students, for students. Let loose and learn something new: maybe aikido or archery, futsal or water polo. Immerse yourself in sailing and cycling. Or start your own club — Hantis, anyone? uw.edu/ima/rec-clubs



IMPACT OVER 161 YEARS

Whether we're making The Wave famous or making waves in health care, technology, social justice or athletics, the UW has sent out ripples of impact since 1861.

#1 Most Innovative Public University in the World
Reuters, 2019

One of the Top 50 Green Colleges
Princeton Review, 2022

#7 Best Global University
U.S. News & World Report, 2022

IN THE **TOP 10**

Schools Producing the Most Peace Corps Volunteers, 2020

#4 Among U.S. Public Universities
Times Higher Education, 2022

RUN WITH THE PACK

Some well-known Huskies

BRUCE LEE

RAINN WILSON

KYU LEE

RYAN LEWIS

BEVERLY CLEARY

THE FUNG BROTHERS

BARBARA EARL THOMAS

JOEL MCHALE

JEAN SMART

CHRISTINA CHANG

ANNA FARIS

STEVE POOL

KIM THAYIL

KRISTIN HANNAH

KENNY G

UW Research Professor Lisa Jackson led the world's first trial of a COVID-19 vaccine (Moderna).

UW aerospace engineers have helped Boeing revolutionize travel, from the first West Coast wind tunnel to the 787.

TIM PATERSON, '78, WROTE THE DISK OPERATING SYSTEM THAT BECAME MS-DOS.

Willard Geer, UW physics '27, invented the process that made color TV a reality.

The Wave was popularized by UW cheerleader Robb Weller in 1981 and quickly swept the nation.

A UW eight-oar rowing team — the famed "Boys in the Boat" — won gold at the 1936 Berlin Olympics in the lead-up to WWII, inspiring a bestselling book and a new film directed by George Clooney.

7 Nobel Prizes, 2 Pulitzers and 17 MacArthur "genius grant" Fellowships won by UW faculty

Tom Love, '72, '75, co-wrote the programming language that became the backbone of every Mac, iPhone and iPad.

MAKE YOUR MARK



Black Student Union officers celebrating the group's 50th anniversary.

THE IMPACT YOU MAKE ON THE UNIVERSITY IS JUST AS IMPORTANT AS THE IMPACT WE MAKE ON THE WORLD.

YOUR VOICE MATTERS

Throughout UW history, students have taken the initiative to create a better Husky Experience for future generations. In 1968, the UW's Black Student Union led a sit-in at the University president's office for increased diversity and racial equity on campus. This bold direct action led to the creation of the Office of Minority Affairs & Diversity, the Samuel E. Kelly Ethnic Cultural Center and the American Ethnic Studies program, which all continue to enrich the UW today.

More recent student-driven efforts have led to:

- Safe, supportive campus spaces like the Q Center and wəṭəbʔaltx™ – Intellectual House
- More gender-neutral bathrooms on campus and the use of chosen names on diplomas
- University funding to support the needs of Black students, faculty and staff

LEARNING THROUGH SERVICE

Our students help carry out the UW's mission as a public university. Become a tutor and mentor for local K-12 students. Work with regional partners addressing homelessness, advocating for immigrants' rights and relieving hunger. Help restore natural habitats or get your hands dirty at the UW Farm. Whatever causes you're most passionate about, you can show up and make a difference in our community — and the world.



WHAT'S YOUR MAJOR?

Consider your interests:
Which classes do you enjoy most?

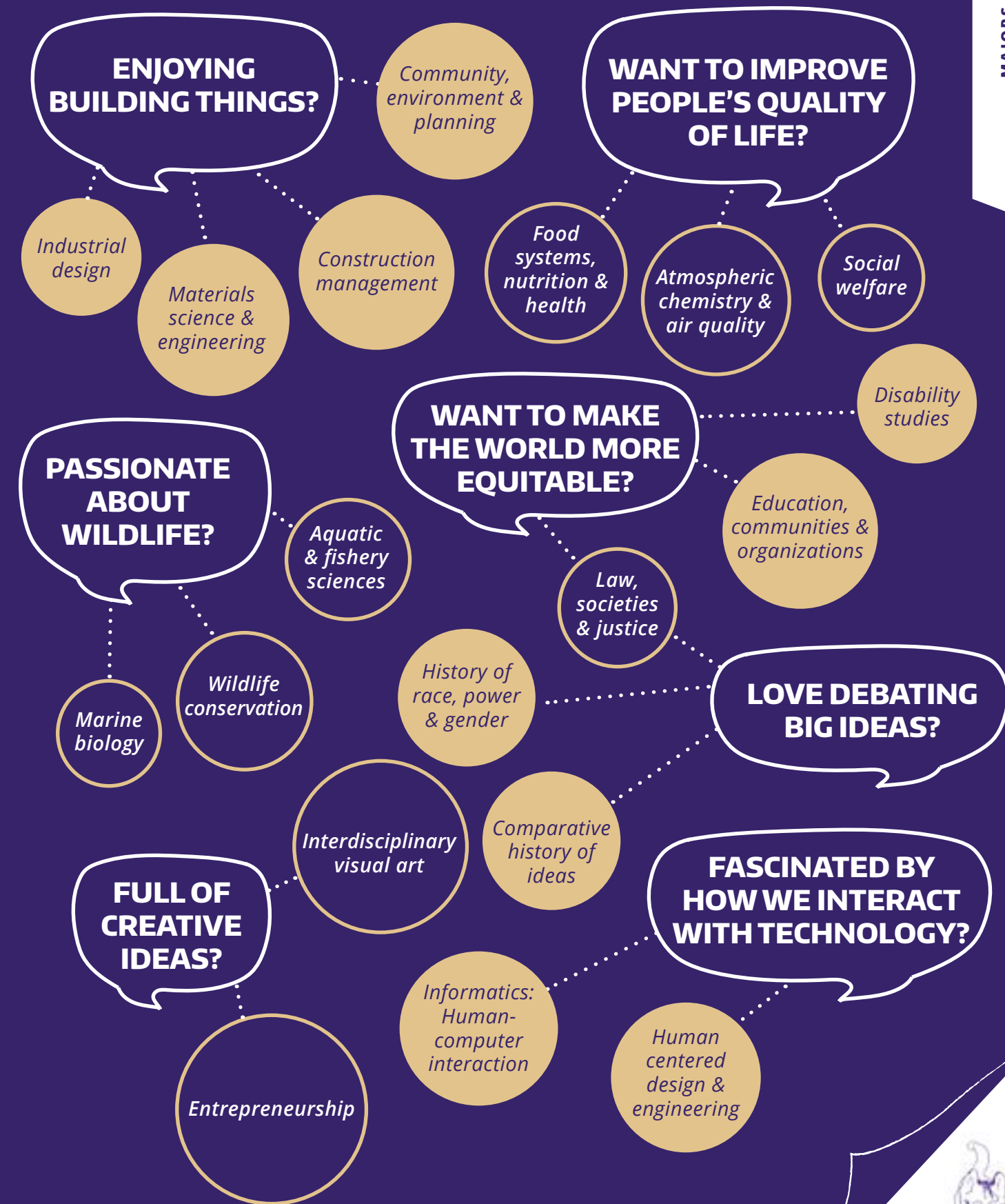
Assess your abilities:
What are your strengths and challenges?

Explore your options:
With over 180 majors at the UW, many paths can lead from a single interest.



What sparks
your
curiosity?

The program that's right for you might be one you haven't considered (or even heard of) yet.





YOUR MAJOR AND THE APPLICATION FOR ADMISSION

While the vast majority of students are admitted to their majors through the standard admission process *after* enrolling at the UW, some majors at the UW — such as computer science and engineering — admit students directly as freshmen. You must indicate these as your first-choice major on the admission application to be considered for direct admission. Your requested first- and second-choice majors may be used as factors in your admission decision. Learn more about specific majors at admit.uw.edu/academics/majors.

KEY

- + Open
- Minimum requirements
- ▲ Capacity-constrained
- Minor available
- * A small percentage of students are admitted to these majors directly as freshmen. The majority will be admitted through the standard admission process after enrolling at the UW.

Italics indicate curricular options in the major.

ADMISSION TO MAJORS

Some majors (including computer science and engineering) are in high demand, and entrance to them is selective. Others have more capacity and are open to all. It's important to understand which majors are **open**, **have minimum requirements** or **are capacity-constrained**.

admit.uw.edu/apply/admission-to-major

OPEN MAJORS (+)

These majors are available when you're admitted to the UW or can be declared at any time by any student in good academic standing.

MAJORS WITH MINIMUM REQUIREMENTS (—)

These majors have a set of prerequisite courses with a minimum GPA. All current UW students who meet the minimum requirements are admitted.

CAPACITY-CONSTRAINED MAJORS (▲)

Capacity-constrained majors are selective and have extra requirements, which may include an additional application process. Completing the minimum admission requirements does not guarantee admission to capacity-constrained majors. You can apply to most of these majors once you are a UW student. However, for majors in the Allen School of Computer Science and the College of Engineering, the main pathway is direct freshman admission. Current UW students may apply to them after enrollment, but space is extremely limited.



Undergraduate majors:
admit.uw.edu/majorslist

WHAT CAN YOU STUDY?

ALLEN SCHOOL OF COMPUTER SCIENCE & ENGINEERING

Computer Engineering ▲
Computer Science ▲

COLLEGE OF BUILT ENVIRONMENTS

Architectural Design ▲ ■
Architecture *▲ ■
Community, Environment & Planning ▲ ■
Construction Management *▲ ■
Landscape Architecture ▲ ■
Real Estate —

COLLEGE OF EDUCATION

Early Childhood & Family Studies ▲
Teaching & Learning
Education, Communities & Organizations ▲

...AND THERE'S MORE



COLLEGE OF ARTS & SCIENCES

ARTS DIVISION

- Art +**
*Interdisciplinary Visual Arts;
Painting & Drawing; Photomedia;
Three-Dimensional Forum*

Art History ■

Dance — ■

Design ▲
*Industrial Design;
Interaction Design; Visual
Communication Design*

Drama —
Design; Performance

Music, B.A. *▲ ■
*American Music Studies; Early
Music; Instrumental; Music
History; Music Theory; Voice*

Ethnomusicology, B.A. ▲

Guitar, B.M. *▲
- Jazz Studies, B.M. *▲**

**Music Composition,
B.M. *▲**

Music Education, B.A. *▲
Instrument; Vocal

**Orchestral Instruments,
B.M. *▲**

Organ, B.M. *▲

**Percussion Performance,
B.M. *▲**
Orchestral Percussion

Piano, B.M. *▲

Strings, B.M. *▲

Voice, B.M. *▲

HUMANITIES DIVISION

- Asian Languages
& Cultures — ■**

Chinese — ■

Cinema & Media Studies —

Classical Studies + ■

Classics +

**Comparative History of
Ideas + ■**

Comparative Literature — ■

Danish + ■

English — ■
*Creative Writing;
Language & Literature*

Finnish + ■

French + ■

Germanics — ■

Greek + ■

Italian + ■

Japanese — ■
Linguistics; Literature

Korean — ■

Latin + ■
- Linguistics — ■**
Romance Linguistics

Near Eastern Studies + ■
*Comparative Civilizations;
Hebrew Bible & Ancient
Near Eastern Studies;
Languages & Cultures*

Norwegian + ■

**Scandinavian Area
Studies + ■**

**Slavic Languages &
Literatures + ■**
*East European Languages,
Literature & Culture; Russian
Language & Literature*

**South Asian Languages
& Literature (Hindi,
Sanskrit, Urdu) — ■**

Spanish — ■

Swedish + ■

NATURAL SCIENCES DIVISION

- Applied & Computational
Mathematical Sciences
(ACMS) ▲**
*Biological & Life Sciences; Data
Science; Discrete Mathematics
& Algorithms; Engineering &
Physical Sciences; Mathematical
Economics & Quantitative
Finance; Scientific Computing &
Numerical Algorithms; Social &
Behavioral Sciences*

Applied Mathematics ▲ ■

Astronomy ▲

Biochemistry *▲

Biology, B.A. ▲

Biology, B.S. ▲
*Ecology, Evolution & Conservation;
General Biology; Molecular,
Cellular & Developmental;
Physiology; Plant*
- Chemistry, B.A., B.S. *▲ ■**

**Computational Finance &
Risk Management, B.A. ▲ ■**

Mathematics, B.A. ▲ ■
Philosophy; Teacher Preparation

Mathematics, B.S. ▲

Neuroscience *▲

Physics ▲ ■
*Applied Physics; Biological
Physics; Comprehensive Physics;
Teacher Preparation*

Psychology, B.A., B.S. ▲

**Speech & Hearing
Sciences ▲**

Statistics ▲ ■
Data Science

SOCIAL SCIENCES DIVISION

- American Ethnic Studies +**

**American Indian
Studies — ■**

Anthropology, B.A. + ■
*Anthropology of Globalization;
Archaeological Sciences;
Human Evolutionary Biology;
Indigenous Archaeology;
Medical Anthropology &
Global Health*

Anthropology, B.S. + ■
*Archaeological Sciences;
Human Evolutionary Biology;
Medical Anthropology &
Global Health*

Asian Studies +

Communication ▲
*Journalism & Public Interest
Communication*

Comparative Religion + ■

**Disability Studies
(Individualized
Studies) + ■**

Economics, B.A., B.S. ▲

European Studies + ■

**Gender, Women &
Sexuality Studies + ■**
- Geography — ■**
*Cities, Citizenship & Migration;
Data Science; Environment,
Economy & Sustainability;
Globalization, Health &
Development; GIS, Mapping
& Society*

**Global & Regional
Studies + ■**

History — ■
*History of Empire & Colonialism;
History of Race, Gender & Power;
History of Religion & Society;
History of War & Society*

**History & Philosophy of
Science —**

Jewish Studies + ■

**Latin American &
Caribbean Studies + ■**

**Law, Societies & Justice
▲ ■**

Philosophy — ■
Ethics

Political Science — ■
*International Security;
Political Economy*

Sociology —

COLLEGE OF ENGINEERING

- Aeronautics & Astronautics ▲ ■**

Bioengineering ▲
Data Science; Nanoscience & Molecular Engineering

Chemical Engineering ▲
Nanoscience & Molecular Engineering

Civil Engineering ▲

Electrical & Computer Engineering ▲

Electrical Engineering ▲
Nanoscience & Molecular Engineering

Environmental Engineering ▲

Human Centered Design & Engineering ▲
Data Science

Industrial Engineering ▲

Materials Science & Engineering ▲ ■
Nanoscience & Molecular Engineering

Mechanical Engineering ▲
*Biomechanics; Mechatronics; Nanoscience &
Molecular Engineering*

COLLEGE OF THE ENVIRONMENT

- Aquatic & Fishery Sciences + ■**

Atmospheric Sciences —
Chemistry; Climate; Data Science; Meteorology

Bioresource Science & Engineering ▲

Earth & Space Sciences, B.A. + ■

Earth & Space Sciences, B.S. + ■
Biology; Environmental Earth Sciences; Geology; Physics

**Environmental Science & Terrestrial
Resource Management + ■**
*Landscape Ecology & Conservation; Restoration Ecology &
Environmental Horticulture; Sustainable Forest Management;
Wildlife Conservation*

Environmental Studies + ■

Marine Biology + ■

Oceanography, B.A., B.S. + ■

EVANS SCHOOL OF PUBLIC
POLICY & GOVERNANCE

- Public Policy** (minor only)

FOSTER SCHOOL OF BUSINESS

- Business Administration *▲ ■**
*Accounting; Entrepreneurship; Finance; Human Resource
Management; Information Systems; Marketing; Operations
& Supply Chain Management*

INFORMATION SCHOOL

- Informatics *▲ ■**
*Biomedical & Health Informatics; Data Science; Human-
Computer Interaction; Information Architecture; Information
Assurance & Cybersecurity*

SCHOOL OF MEDICINE

- Medical Laboratory Science ▲**

Microbiology — ■

SCHOOL OF NURSING

- Nursing ▲**

SCHOOL OF PUBLIC HEALTH

- Environmental Health ▲ ■**

Food Systems, Nutrition & Health —

Public Health-Global Health ▲

SCHOOL OF SOCIAL WORK

- Social Welfare ▲**

MINOR ONLY

- Data Science**

Leadership



LEARN FROM THE BEST

25

ACADEMICS



Innovative, passionate, approachable. Our highly respected instructors bring their research and lived experiences into the classroom, inspiring you to think in new ways about a subject and the world. They engage you in understanding and addressing the most pressing challenges of our time, like climate change, systemic racism and misinformation. They're caring mentors who want to get to know you as a person and help open doors to other opportunities.



My favorite class, Living with Volcanoes, was taught by Prof. George Bergantz, who is so passionate about his subject that you become passionate. I consistently looked forward to lectures."



Sydney, '25
Seattle, WA
Political Science and
Law, Societies & Justice

60+

**MODERN AND
CLASSICAL
LANGUAGES OFFERED**

91.3%

**OF CLASSES IN
2021-22 HAD 100
OR FEWER STUDENTS**

#2

**UNIVERSITY PRODUCING
THE MOST FEMALE
SOFTWARE ENGINEERS**
Steppingblocks, 2022

UNIVERSITY of WASHINGTON



INSPIRATIONAL EDUCATORS



VALERIE CURTIS-NEWTON

*Professor, School of Drama,
College of Arts & Sciences*

Curtis-Newton, winner of the 2021 University Faculty Lecture Award, is a nationally renowned director who teaches her students to be brave and move through the world with greater kindness.



SAMUEL JAFFEE

*Associate Teaching Professor,
Spanish & Portuguese Studies,
College of Arts & Sciences*

Jaffee is a creative, student-focused teacher who has designed several new courses, including one on Andean culture in which students produced their own digital work.



INES JURCEVIC

*Assistant Professor,
Daniel J. Evans School of Public
Policy & Governance*

Jurcevic makes her classes welcoming and inclusive of diverse learning styles by offering a mix of guest speakers, small group activities, discussion, role play and lectures.



JOSÉ M. GUZMÁN

*Assistant Teaching Professor,
Aquatic and Fishery Sciences,
College of the Environment*

Guzmán doesn't just introduce students to a subject, he inspires them to dig deeper as they help each other learn, creating a welcoming, engaging learning environment.



XIAOSONG LI

*Professor, Chemistry,
College of Arts & Sciences*

Li is an enthusiastic, dedicated instructor and mentor who receives rave reviews from students in his introductory classes for making challenging material interesting.



DON'T JUST TAKE OUR WORD FOR IT

All six of the UW's health sciences schools – Dentistry, Medicine, Nursing, Pharmacy, Public Health and Social Work – are ranked in the nation's top 10.

#1

**SCHOOL OF
OCEANOGRAPHY IN
THE WORLD**
*Global Ranking of
Academic Subjects, 2021*

#2

**SCHOOL OF NURSING
IN THE U.S.**
*U.S. News & World
Report, 2021*

#7

**SCHOOL OF
EDUCATION IN
THE WORLD**
*Global Ranking of
Academic Subjects, 2021*

#10

**IN THE U.S. FOR
COMPUTER SCIENCE**
*U.S. News & World
Report, 2021*

HONORS

The University of Washington Honors Program offers interdisciplinary education and local-to-global community engagement through innovative, seminar-style classes, experiential learning projects and a practice of purposeful reflection. honors.uw.edu



BEYOND THE CLASSROOM

You don't stop learning when you leave the classroom — time outside of class can be just as transformative. Immersive learning experiences help you turn ideas into action.



As an oceanography major, Alyssa Scott, '17, conducted research at the UW's Friday Harbor Laboratories, a unique marine field station in the San Juan Islands. She went on to intern with and become coordinator of the San Juan County Marine Mammal Stranding Network.



STUDY ABROAD

The UW offers more than 600 study abroad and internship options in Africa, the Americas, Asia, Europe, the Middle East and Oceania.

uw.edu/studyabroad

RESEARCH

Get hands-on experience on an ocean research vessel. Unearth fossils on a dinosaur dig. Serve as a consultant for local women- and minority-owned businesses. Conduct lifesaving medical research in a lab.

Research isn't just for STEM fields. Each year, the Summer Institute in the Arts and Humanities brings together undergraduates from all three UW campuses to tackle a single topic through multiple interdisciplinary projects.

UNDERGRADUATE RESEARCH (2020–21)

7,086 STUDENTS PARTICIPATED

1,286,468 HOURS

HOURS



JUMP-START YOUR CAREER HERE

Let's get you where you want to go. Gain hands-on experience and find mentors to help guide you, through internships and Optional Practical Training (OPT). Husky graduates are sought after by a wide range of employers — large and small; private-sector, public and nonprofit; here in the Pacific Northwest and around the world.

admit.uw.edu/careers

80% of students are employed or in graduate school within 6 months of graduation

54,525 jobs posted in the Career Center annually

68% of students graduate with internship experience

The UW has a great Career & Internship Center that helped me throughout my job search. The advisers did mock interviews and tailored questions to the specific job I was applying for."

Molly, '22
China
Informatics



HERE TO HELP YOU

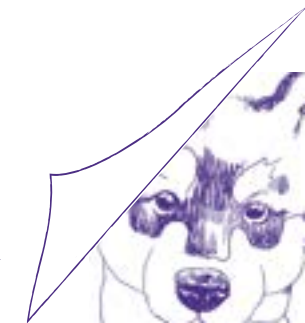
PathwayU helps you gain insights on your interests, values and personality, so you can explore majors and career paths that align with who you are. At the **Career & Internship Center**, you can receive individualized coaching, get your resume and cover letters reviewed, and learn about thousands of internship and job opportunities.

careers.uw.edu

ENCOURAGING ENTREPRENEURSHIP

- The UW's **Buerk Center for Entrepreneurship** offers two undergraduate programs that focus on strategy, finance and marketing.
- The immersive, three- to four-year **Lavin Entrepreneurship Program** provides mentoring, networking, a scholarship to intern in an early-stage company and job-search support.
- If you're ready to launch your own company, the **Jones + Foster Accelerator Program** offers invaluable equity-free help to startups in their first six months.
- **CoMotion** is a collaborative innovation hub that empowers innovators by providing training, education, intellectual-property advice, seed funding and internships. Over the past five years, it has launched 73 new startups and spinoffs.

comotion.uw.edu





WHAT TO SUBMIT

- ❑ Application + essay responses
- ❑ Application fee (fee waivers available for U.S. applicants)
- ❑ International applicants only: English proficiency test scores (TOEFL, IELTS or Duolingo)

What we consider

We want to know you as a person. Use the application to share those things the numbers don't always reveal. Our holistic review takes into consideration:

- Level of academic achievement
- Completed College Academic Distribution Requirements (CADRs)
- Strength of senior-year schedule
- Individual grades and grade trends
- Community service and leadership
- Cultural awareness and unique perspectives or experiences

Your choice of majors may also be used in the admission decision. The most competitive applicants will present a strong academic curriculum in a variety of subject areas, a high level of English proficiency (for international applicants) and achievements at school and in the community.

Transcripts

The application will ask you to self-report your high school academic record. Please do not upload an unofficial copy of your high school transcript unless requested.

SAT/ACT scores

The UW no longer requires SAT/ACT scores. However, you may send them if you choose.

Please do not send letters of recommendation.

REQUIREMENTS AND CREDITS

All applicants must complete these minimum course requirements (College Academic Distribution Requirements, or CADRs) — but the best prepared will go beyond them.

Subject	Credits*
English	4
Mathematics	3
Social sciences/social studies	3
World languages	2
Science	3 (2 in lab science)
Senior year math-based quantitative course	1
Fine, visual or performing arts	0.5
Academic elective	0.5

*1 credit = 1 year

ENGLISH PROFICIENCY

(international applicants only)

International students must submit an English proficiency test score that meets the UW's requirement.

	TOEFL (iBT)	IELTS	DET
Minimum score required	76	6.0	105
Recommended score	92 or higher	7.0	120

English proficiency is considered as part of the application review process. The exam must be taken on or before Dec. 31, and scores must be sent directly from the testing agency to the UW.

USING SAT OR ACT SCORES AS AN ENGLISH PROFICIENCY ALTERNATIVE

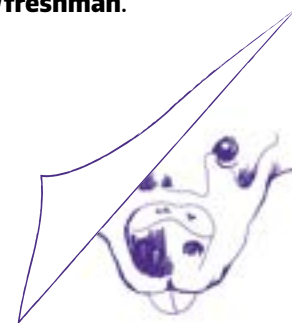
The SAT and ACT are not required for admission, but international students may use one of these exams to satisfy English proficiency. The UW considers English proficiency met if you meet both the following conditions:

- A minimum grade of B in all high-school-level English writing or literature courses where English is the school's primary language of instruction for grades 10–12
- A minimum SAT Evidence-Based Reading and Writing score of 580 or ACT English score of 22

If you will use the SAT or ACT to meet English proficiency, you must request official scores be sent to the UW (school code 4854).



For more information on the freshman application process and English proficiency requirements, visit admit.uw.edu/apply/freshman.



PAYING FOR COLLEGE

We believe that Washington students from all economic backgrounds should have the opportunity to attend the University of Washington. UW graduates complete college with less debt than the national average.

TOTAL COST OF ATTENDANCE 2022–23

TUITION

Washington resident: \$12,242
Nonresident: \$40,740

OTHER BUDGET CONSIDERATIONS

Books & course supplies: \$900
Housing & food: \$16,068
Personal/misc. expenses: \$2,388
Transportation: \$492

FINANCIAL AID

For U.S. students to be considered for all forms of UW financial aid, file the Free Application for Federal Student Aid (FAFSA). Undocumented students living in Washington can submit the Washington Application for State Financial Aid (WASFA).

- The FAFSA and WASFA open Oct. 1 of your senior year.
- The priority date for both is Jan. 15 of your senior year.

For more information, visit:

- fafsa.gov
- wsac.wa.gov/wasfa
- uw.edu/financialaid

HUSKY PROMISE

The Husky Promise is our guarantee that financial challenges will not stand in the way of Washington state students' ability to earn a UW degree. It ensures that full tuition and standard fees will be covered by grant or scholarship support for eligible students.

uw.edu/huskypromise

SCHOLARSHIPS

The UW offers scholarships for everything from academic pursuits and research activities to community service and musical talents. U.S. students are considered for some scholarship programs automatically as part of their admission or financial aid applications, while other programs are available to all students through departments once enrolled. For example, eligible students are automatically considered for these scholarships when they apply to the UW:

- The Presidential Scholarship recognizes Washington state students who demonstrate exceptional leadership, community engagement and promise. The \$10,000-per-year award is renewable for up to four years.
- Purple & Gold Scholarships are given to U.S. students from outside Washington state who enroll at the Seattle campus. Amounts vary and are given for four years.

admit.uw.edu/costs/scholarships

MORE INFORMATION

Net price calculator:
admit.uw.edu/net-price-calculator

Washington state residency:
admit.uw.edu/residency

Washington College Grant:
wsac.wa.gov/wcg

The financial aid counselors are really patient and willing to sit with you and break down everything. After meeting with the counselors, things began to make sense."

Letauaeletise, '23
Spanaway, WA
American Ethnic Studies
and Anthropology

OVER
52% OF UNDERGRADS
RECEIVE SOME FORM
OF FINANCIAL AID

#3 PUBLIC U.S. UNIVERSITY
THAT "PAYS OFF THE MOST"
CNBC Make It, 2020

#5 KIPLINGER'S BEST
COLLEGE VALUES

JOIN THE PACK

ADMITTED STUDENT OVERVIEW

3-YEAR AVERAGE ADMIT RATE

Washington residents: 57%
U.S. nonresidents: 49%
International: 52%

AUTUMN 2022

High school GPA, middle 50%:
3.73–3.98 (4.0 scale), 95–99 (100 scale)

Average scores:
TOEFL: 105 (120-point scale)
IELTS: 7.4 (9.0-point scale)
Duolingo: 130 (160-point scale)

MORE TO EXPLORE

TRANSFER ADMISSIONS

admit.uw.edu/apply/transfer

GRADUATE SCHOOL ADMISSIONS

grad.uw.edu/admissions

WASHINGTON STATE RESIDENCY

admit.uw.edu/residency

INTERNATIONAL & ENGLISH LANGUAGE PROGRAMS

ielp.uw.edu

UW BOTHELL

uwb.edu/admissions

UW TACOMA

tacoma.uw.edu/admissions

TAKE THE NEXT STEP

CONNECT | REQUEST MORE INFO

admit.uw.edu/contact/request-info

VISIT | VIRTUAL OR IN PERSON

admit.uw.edu/visit

APPLY | DEADLINE: NOV. 15

admit.uw.edu/apply/freshman

OFFICE OF ADMISSIONS

admit.uw.edu/contact or 206-543-9686

admit.uw.edu



ADDITIONAL RESOURCES

AP credit: admit.uw.edu/ap

IB credit: admit.uw.edu/ib

A & AS level credit: admit.uw.edu/a-as-level

Running Start: admit.uw.edu/apply/running-start

Homeschooled applicants: admit.uw.edu/homeschool

Veterans and military families: admit.uw.edu/veteran

“The UW was conveniently close to home and offered me financial aid, along with great academic opportunities.”

Jane, '23
Seattle, WA
Public Health-
Global Health





UNIVERSITY *of* WASHINGTON
1410 NE Campus Parkway, Box 355852
Seattle, WA 98195-5852

DATES & DEADLINES



SEPT. 1

APPLICATION OPENS

MARCH 1–15

NOTIFICATION PERIOD

NOV. 15

APPLICATION DEADLINE

MAY 1

DEADLINE TO ACCEPT
OFFER OF ADMISSION